

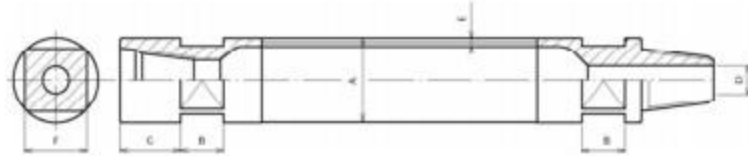
DRILL RODS



Maxdrill Rock Tools Co., Ltd

MAXDRILL PR RODS PERCUSSION ROTARY RODS

FRICTION WELDED RODS THREADS NITRATED



| Description | Thread type | Weight | O.D. | I.D. coupling | Wall thickness | Width spanner | Across flat |
|------------------|---------------|--------|-------|---------------|----------------|---------------|-------------|
| AWJ HD × 1500 mm | AWJ | 8 | 44.4 | 16 | 6.3 | 20 | 36 |
| AWJ HD × 2000 mm | AWJ | 11 | 44.4 | 16 | 6.3 | 20 | 36 |
| AWJ HD × 3000 mm | AWJ | 15 | 44.4 | 16 | 6.3 | 20 | 36 |
| BWJ HD × 1500 mm | BWJ | 10 | 54 | 19 | 6.3 | 32 | 46 |
| BWJ HD × 2000 mm | BWJ | 13 | 54 | 19 | 6.3 | 32 | 46 |
| BWJ HD × 3000 mm | BWJ | 19 | 54 | 19 | 6.3 | 32 | 46 |
| 70 × 1000 mm | RD 50-6 | 12 | 69.9 | 25 | 4 | 40 | 49 |
| 70 × 1500 mm | RD 50-6 | 16 | 69.9 | 25 | 4 | 40 | 49 |
| 70 × 2000 mm | RD 50-6 | 20 | 69.9 | 25 | 4 | 40 | 49 |
| 70 × 3000 mm | RD 50-6 | 27 | 69.9 | 25 | 4 | 40 | 49 |
| 70 × 1000 mm | API 2"3/8 Reg | 11 | 76 | 30 | 4 | 40 | 49 |
| 76 × 1500 mm | API 2"3/8 Reg | 15 | 76 | 30 | 4 | 40 | 65 |
| 76 × 2000 mm | API 2"3/8 Reg | 18 | 76 | 30 | 4 | 40 | 65 |
| 76 × 3000 mm | API 2"3/8 Reg | 25 | 76 | 30 | 4 | 40 | 65 |
| 76 HD × 1000 mm | API 2"3/8 Reg | 15 | 76 | 30 | 6.35 | 40 | 65 |
| 76 HD × 1500 mm | API 2"3/8 Reg | 20 | 76 | 30 | 6.35 | 40 | 65 |
| 76 HD × 2000 mm | API 2"3/8 Reg | 26 | 76 | 30 | 6.35 | 40 | 65 |
| 76 HD × 3000 mm | API 2"3/8 Reg | 36 | 76 | 30 | 6.35 | 40 | 65 |
| 89 × 1500 mm | API 2"3/8 Reg | 19 | 89.1 | 25 | 4 | 40 | 65 |
| 89 × 2000 mm | API 2"3/8 Reg | 25 | 89.1 | 25 | 4 | 40 | 65 |
| 89 × 3000 mm | API 2"3/8 Reg | 31 | 89.1 | 25 | 4 | 40 | 65 |
| 89 HD × 1000 mm | API 2"3/8 Reg | 18 | 89.1 | 25 | 6.35 | 40 | 65 |
| 89 HD × 1500 mm | API 2"3/8 Reg | 25 | 89.1 | 25 | 6.35 | 40 | 65 |
| 89 HD × 2000 mm | API 2"3/8 Reg | 31 | 89.1 | 25 | 6.35 | 40 | 65 |
| 89 HD × 3000 mm | API 2"3/8 Reg | 44 | 89.1 | 25 | 6.35 | 40 | 65 |
| 114 × 1500 mm | API 3"1/2 Reg | 36 | 114.3 | 42 | 6.35 | 50 | 95 |
| 114 × 2000 mm | API 3"1/2 Reg | 45 | 114.3 | 42 | 6.35 | 50 | 95 |
| 114 × 3000 mm | API 3"1/2 Reg | 61 | 114.3 | 42 | 6.35 | 50 | 95 |
| 114 × 4500 mm | API 3"1/2 Reg | 87 | 114.3 | 42 | 6.35 | 50 | 95 |
| 114 × 6000 mm | API 3"1/2 Reg | 111 | 114.3 | 42 | 6.35 | 50 | 95 |
| 140 × 1500 mm | API 4"1/2 Reg | 52 | 139.7 | 57 | 6.35 | 50 | 114 |
| 140 × 2000 mm | API 4"1/2 Reg | 62 | 139.7 | 57 | 6.35 | 50 | 114 |
| 140 × 3000 mm | API 4"1/2 Reg | 83 | 139.7 | 57 | 6.35 | 50 | 114 |
| 140 × 4500 mm | API 4"1/2 Reg | 117 | 139.7 | 57 | 6.35 | 50 | 114 |
| 140 × 6000 mm | API 4"1/2 Reg | 146 | 139.7 | 57 | 6.35 | 50 | 114 |

Threads and wall thickness upon request.

MAXDRILL DRILL RODS FOR CARROUSEL PIPE CHANGER

DRILL RODS FOR HAUSHERR, DOMINE, BONNE ESPERANCE RIGS

FRICTION WELDED RODS THREADS NITRATED



| Description | Weight | Thread type | O.D | I.D.END | Wall thickness |
|-----------------|--------|---------------|-------|---------|----------------|
| 76HD×3000mm | 39 | API 2"3/8 Reg | 76 | 30 | 6.35 |
| 76 HD×3200mm | 41 | API 2"3/8 Reg | 76 | 30 | 6.35 |
| 76 HD×4500mm | 56 | API 2"3/8 Reg | 76 | 30 | 6.35 |
| 76 HD×6000mm | 73 | API 2"3/8 Reg | 76 | 30 | 6.35 |
| 76 EP8×3000mm | 46 | API 2"3/8 Reg | 76 | 30 | 8 |
| 76 EP8×3200mm | 58 | API 2"3/8 Reg | 76 | 30 | 8 |
| 76 EP8×4500mm | 66 | API 2"3/8 Reg | 76 | 30 | 8 |
| 76 EP8×6000mm | 86 | API 2"3/8 Reg | 76 | 30 | 8 |
| 80×1600mm | 32 | API 2"3/8 Reg | 80 | 25 | 8 |
| 80×3000mm | 54 | API 2"3/8 Reg | 80 | 25 | 8 |
| 80×3200mm | 57 | API 2"3/8 Reg | 80 | 25 | 8 |
| 80×4500mm | 78 | API 2"3/8 Reg | 80 | 25 | 8 |
| 80×6000 mm | 101 | API 2"3/8 Reg | 80 | 25 | 8 |
| 89 HD×3000 mm | 50 | API 2"3/8 Reg | 89.1 | 25 | 6.35 |
| 89 HD×3200 mm | 53 | API 2"3/8 Reg | 89.1 | 25 | 6.35 |
| 89 HD×4500 mm | 70 | API 2"3/8 Reg | 89.1 | 25 | 6.35 |
| 89 HD×6000 mm | 90 | API 2"3/8 Reg | 89.1 | 25 | 6.35 |
| 89 EP8×3000 mm | 58 | API 2"3/8 Reg | 89.1 | 25 | 8 |
| 89 EP8×3200 mm | 61 | API 2"3/8 Reg | 89.1 | 25 | 8 |
| 89 EP8×4000 mm | 74 | API 2"3/8 Reg | 89.1 | 25 | 8 |
| 89 EP8×4500 mm | 82 | API 2"3/8 Reg | 89.1 | 25 | 8 |
| 89 EP8×6000 mm | 106 | API 2"3/8 Reg | 89.1 | 25 | 8 |
| 114×3000 mm | 69 | API 3"1/2 REG | 114.3 | 42 | 6.35 |
| 114×4500 mm | 96 | API 3"1/2 Reg | 114.3 | 42 | 6.35 |
| 114×6000 mm | 122 | API 3"1/2 Reg | 114.3 | 42 | 6.35 |
| 114 EP8×3000 mm | 79 | API 3"1/2 Reg | 114.3 | 42 | 8.8 |
| 114 EP8×4500 mm | 110 | API 3"1/2 Reg | 114.3 | 42 | 8.8 |
| 114 EP8×6000 mm | 142 | API 3"1/2 Reg | 114.3 | 42 | 8.8 |

FLUSH DRILL RODS FOR ATLAS COPCO AND BOHLER RIGS

| FRICION WELDED RODS THREADS NITRATED | | | | | |
|---|---------------|--------------------|------------|----------------|-----------------------|
| Description | Weight | Thread type | O.D | I.D.END | Wall thickness |
| 76 HD ×3720 mm | 55 | API 2"3/8 Reg | 76 | 30 | 6.3 |
| 76 HD ×6000 mm | 85 | API 2"3/8 Reg | 76 | 30 | 6.3 |
| 89 EP8 ×3720 mm | 69 | API 2"3/8 Reg | 89.1 | 25 | 8.8 |
| 89 EP8 ×6000 mm | 105 | API 2"3/8 Reg | 89.1 | 25 | 8.8 |
| 114 EP8 ×3720 mm | 75 | API 3"1/2 Reg | 114.3 | 42 | 8.8 |
| 114 EP8 ×6000 mm | 119 | API 3"1/2 Reg | 114.3 | 42 | 8.8 |

Threads and wall thickness upon request.



MAXDRILL ROCK TOOLS CO., LTD
KEMAI MACHINERY & EQUIPMENT CO., LTD

Add: Room 408, 4/F, Tower A, Chengshi Fangzhou Building, NO. 25, Zunyi Road Guiyang, Guizhou, China

Tel: +86-851-88639105/06 Fax: +86-851-88639108

E-mail: office@kemaico.com info@kemaico.com

Web: www.max-drilling.com www.kemaico.com www.maxdrill.com.cn